

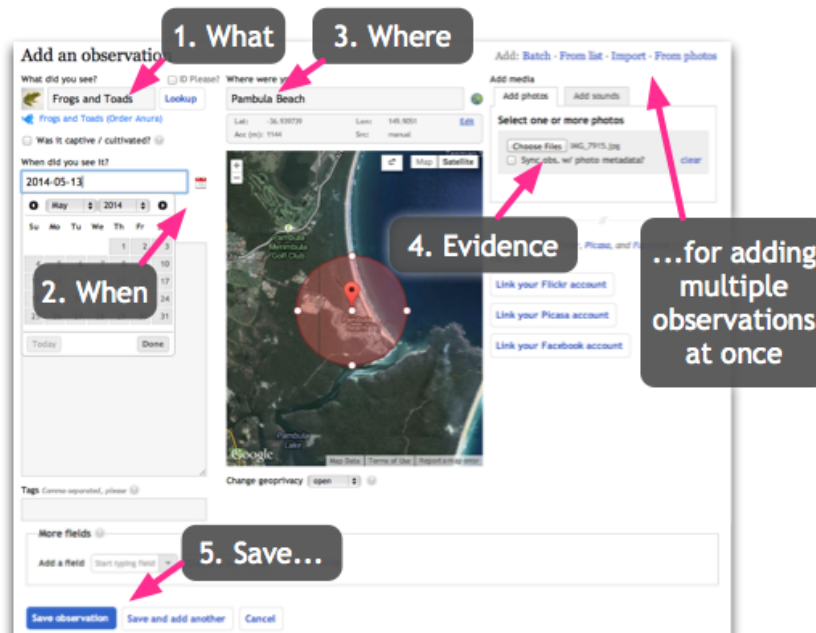
Posting observations with iNaturalist.org

1. Posting a single Observation through the website

Before posting an observation **sign up** or **sign in**. Then from the **Dashboard** menu, click 'Add' to add an observation.



To add an observation enter **(1) what** you saw making sure to click lookup and select one of the returned choices. It's okay to leave this blank or choose something coarse like 'frogs and toads'. Enter **(2) when** you saw it. Use the map controls to record **(3) where** you were. First search for your general location using the text field, then use the map to position the marker more precisely and adjust the accuracy circle accordingly. Change the geoprivacy settings below the map if you'd like to 'obscure' the public coordinates by 10 kilometers. Add **(4) evidence** in the form of photos or sound if possible. Finally, **(5) save** your observation.



If your observation records when, where, and provides evidence, the iNaturalist community might suggest identifications.

The image shows a screenshot of an iNaturalist observation page for a White-winged Fairy-wren (*Malurus leucopterus*) observed by user 'ryber' at 12:15 PM WST on July 19, 2014. The page includes a photo of the bird, a map of Burns Beach, Western Australia, and an identification summary. The summary shows that the user's ID is 'White-winged Fairywren (Malurus leucopterus) Agree!' and the community ID is also 'White-winged Fairywren (Malurus leucopterus) Agree!'. The quality grade is 'research'. The page also features a 'Data Quality Assessment' section with various criteria marked as 'Yes' or 'Unknown', and an 'External Links' section with a link to the Atlas of Living Australia. Several callouts in dark grey boxes with white text and red arrows point to specific elements: 'What' points to the title and photo; 'When' points to the observation date and time; 'Evidence' points to the photo; 'Where' points to the map; 'Comments and IDs from other naturalists will help confirm what you saw' points to the comments section; 'Confirmed observations will become research grade...' points to the quality grade; '...and unless you actively choose not to license your data...' points to the license information; and '...will be included in the Atlas of Living Australia' points to the external link.

What

When

Evidence

Where

Comments and IDs from other naturalists will help confirm what you saw

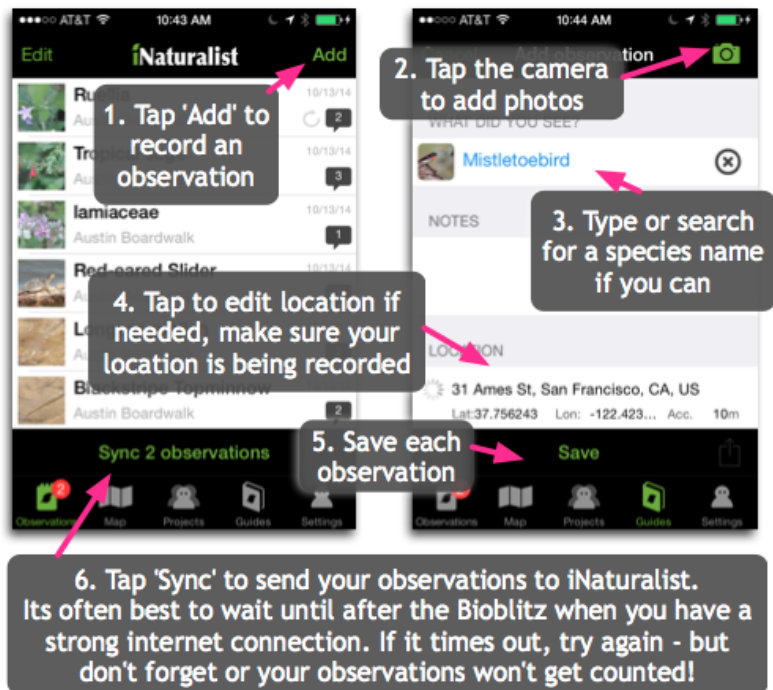
Confirmed observations will become research grade...

...and unless you actively choose not to license your data...

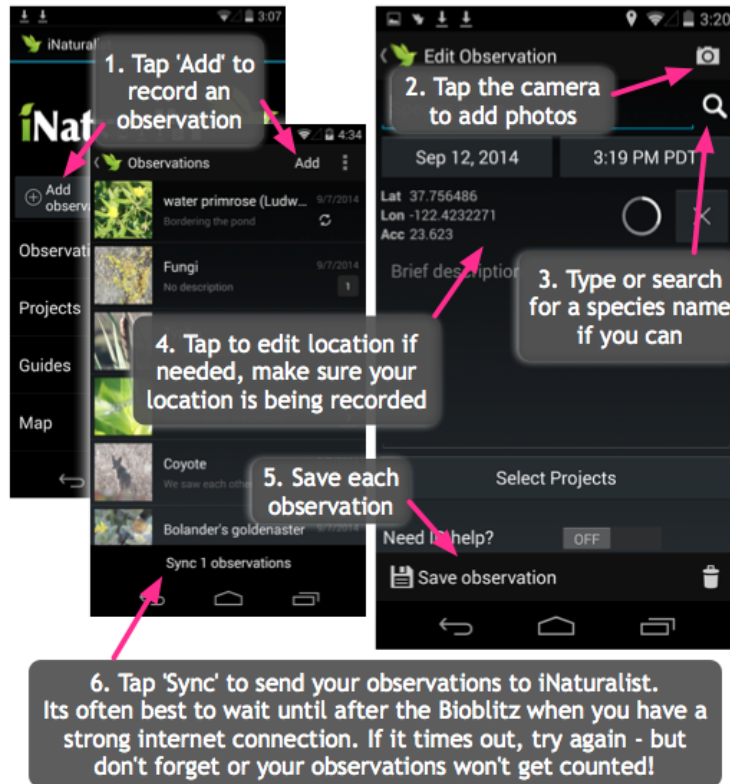
...will be included in the Atlas of Living Australia

2. Posting Observations via the iNaturalist mobile apps

Posting an observation from your iPhone is easy if you download the iNaturalist iPhone app. You'll need to sign in with your account or sign up from your phone.

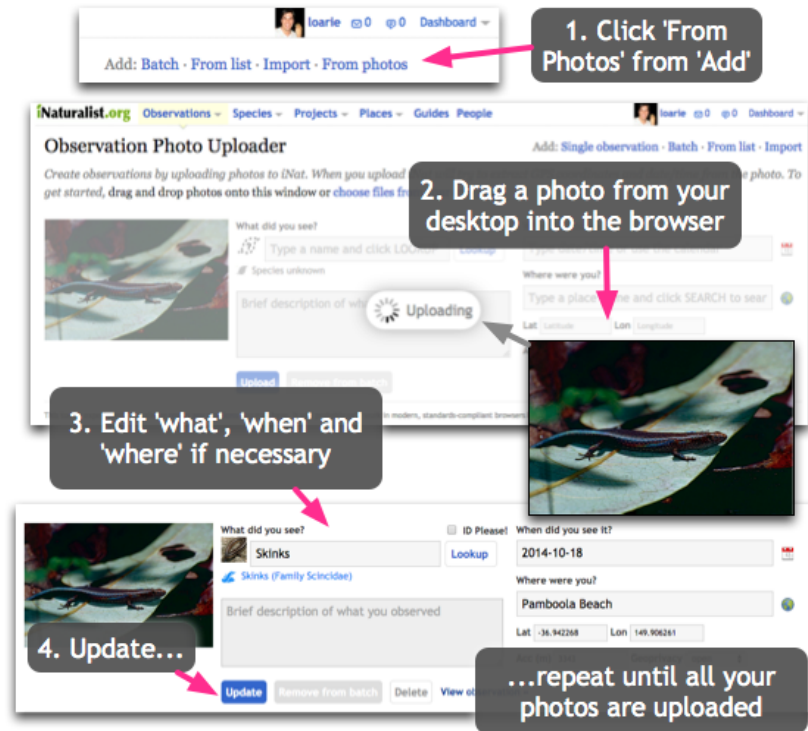


Posting an observation from the iNaturalist Android app is similar.



3. Posting multiple Observation through the website

From the Add Observation form, there are links to several tools you can use to add multiple observations at a time. 'Import' is useful for importing from Flickr photos or a CSV file. If you have multiple digital photos on your computer, 'From photos' is a good choice.



iNaturalist will try to fill the date, location, and 'what did you see' fields with your photo's EXIF data if it exists. If not, you can update those fields after the photo uploads.

If your observation was made within an **ongoing Bioblitz**, iNaturalist will use the date and location to add it to the **Observation count from the Bioblitz**. But it will need an **identification** to count towards the **species checklist**. If you expect needing help identifying your observations, make sure to take clear photos that fill the frame and consider adding multiple photos of different characteristics (like leaves & flowers) to each observation.

